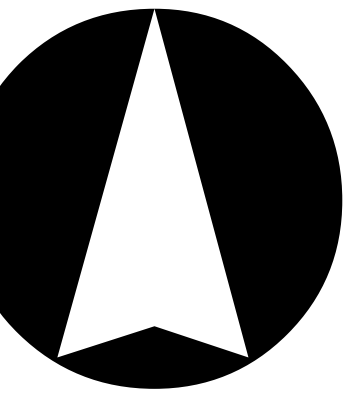



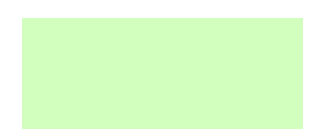





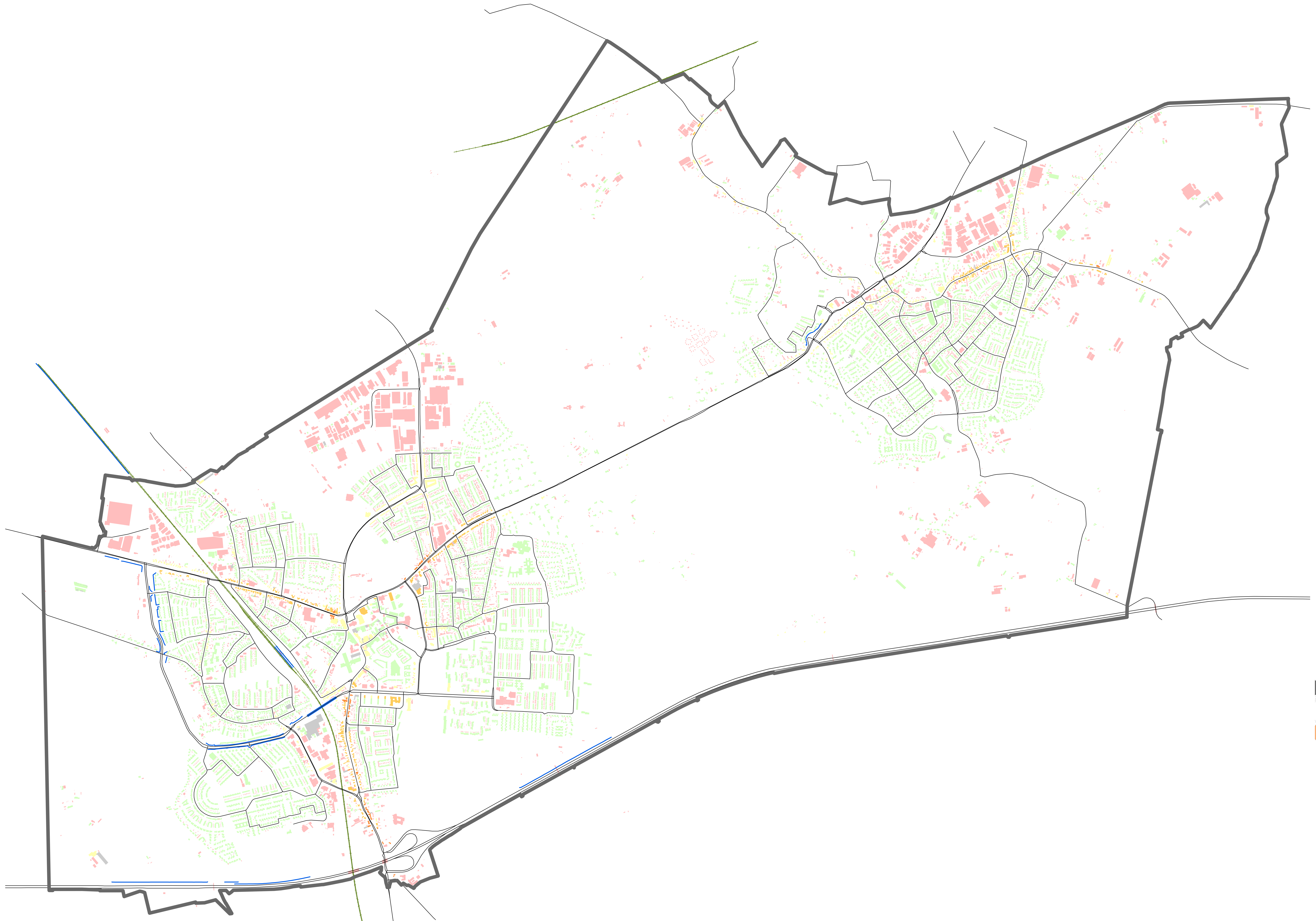
Pandenkaart wegverkeer Lnight 2016

Gemeente Geldrop-Mierlo

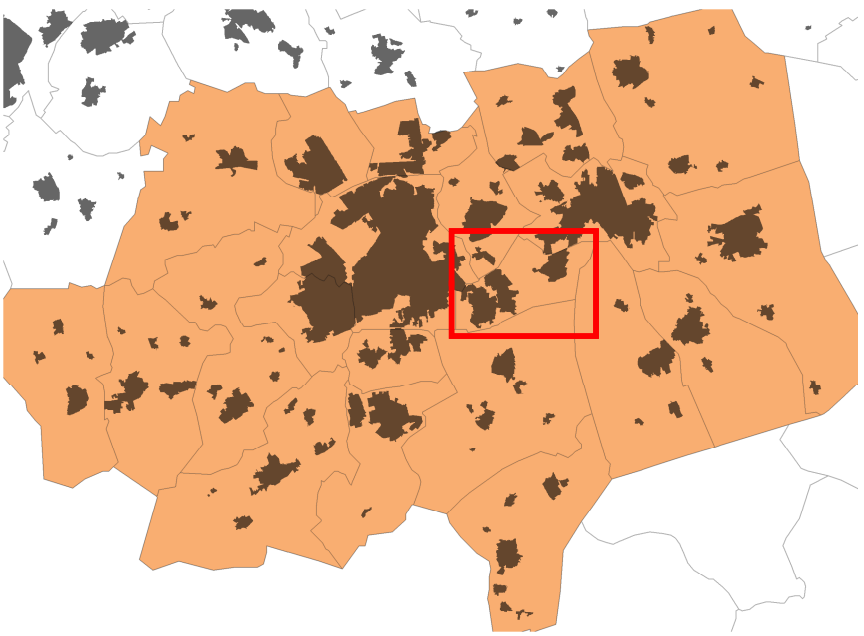


Legenda

-  Gemeentegrens
-  Geluidshermisvaden
-  Wegverkeer 2016
-  Soorten
- Panden wegverkeer Lnight**
-  0-49 dB
-  50-54 dB
-  55-59 dB
-  60-64 dB
-  Geen waarde berekend
-  Niet gelatgeroep



OMGEVINGSDIENST
ZUIDOOST-BRABANT



Opdrachtgever: Gemeente Geldrop-Mierlo

Projectnummer: 235847

Kaartnummer: 9

Datum: 15 mei 2017

Geluidkaart: Gebaseerd op SRM2

Formaat: A0

